



morsEAsia

January 2018
Issue #74

Recommended calling QRGs: 7.028, 10.118/10.128/10.138, 14.058, 18.085, 21.058/21.138, 24.908, 28.058/28.158

FEA Net: 7.026 MHz 2300UTC on Saturdays, 14.054 MHz 0800UTC on Sundays

Newsletter Editor, FEA Net Manager: Nao JO3HPM (jo3hpm@fists-ea.org)

Membership Secretary: Hoz JL1IRB (join-fea@fists-ea.org)

Web Administrator, QSL Manager, Newsletter E-mail Distributor: Harry JL3AMK (webadmin@fists-ea.org)

FISTS members can receive the morsEAsia via e-mail. Please email the web admin with your FISTS#.

Treasurer, Contest & Award Manager: Sugi JK7UST,

<http://www.feacw.net/> or <http://www.fists-ea.org/> (Secondary)

NEW MEMBERS

We're very pleased to welcome our latest members:

Jab, E20FUP (also AC3BO) #15256, Sean, VR2OY #15257, Brian, DU1MS #15258,
Max, DV9/K5EIE #9134 (Transferred from FISTS Americas).

MABUHAY!!! FROM THE "PEARL OF THE ORIENT", THREEZA, DW3TRZ, #15251

I am Threeza (3za) with an amateur call of DW3TRZ from the PHILIPPINES. (My real name is "Theresa" but I got away from it because so many "Theresa" in the web. family/relatives and non-amateur friends call me THESS/TESS)

As of to date, I am affiliated/associated with 5 Amazing Young Ladies league/society in the World of Amateur Radio namely

- Young Ladies Radio League Inc. (YLRL)
- Canadian Ladies Amateur Radio Association (CLARA)
- Australian Ladies Amateur Radio Association (ALARA)
- Japan Ladies Radio Society (JLRS)
- British Young Ladies Amateur Radio Association (BYLARA)

I am also a member of the Philippine Amateur Radio League Inc (PARL Inc) and the Philippine Amateur Radio Association (PARA).

I was first introduced into the hobby early 1990s by friends active in radio communication engaged in public assistance particularly during disasters and natural calamities.

In the year 1994 when I first took my amateur licensing exam and passed with my first amateur call of DU3TAZ. But never had a transmission on the HF bands then, no rig yet and my activity was mostly VHF-2M band operations only. Studies and work made me busy and so I did forgot all about the amateur radio thing for more than 2 decades.

PHILIPPINE AMATEUR RADIO STATION DW3TRZ

MA. THERESA C. ANICETO
123 Sumagang Matanda, Malolos City 3009
Free for QSO 75 MAILHAY!!!

Confirming QSO of Radio Station	Day	Month	Year	UTC	MHZ	RST	Made

CQ Zone : 27 ITU : 50 Grid : PK04 ju IOTA : OC-042 PSE QSL TNX QSL



I worked abroad, traveled a while, and got a family... I am a mother of 2 (both boys) and wife to a lifeguard/triathlete.

It was in January of 2014 that I got back into the hobby when an old amateur friend offered me his HF rig/antenna to try it again. Only this time that I really had my FIRST TASTE OF DX... and it was fun! I retook exam because license got expired for not renewing for 20+ years and amnesty to renew it was far more expensive. Luckily I passed and as the saying goes ONCE A HAM, ALWAYS A HAM !!!

I love to participate in the DX contests too. My first taste of DX contest was September of 2015. My first contest certificate was from the ALL ASIAN DX Contest on Phone and the certificate was nice. Since I have no high end rig, antenna and amps/booster, CONTEST is my opportunity to be copied and heard. Stations are all up and patient to get and pick up each and every stations available for points.

I am the LONE "DW" prefix in he master DX SCP list as of to date. I Upload logs to QSL in most known Amateur logbook such as LOTW, eQSL, DCL, QRZ.com and QRZCQ logbooks, CLUBLOG too. I have worked 98 countries so far, 74 of them confirmed. These contacts on Phone and CW modes only. No DIGI/DATA operations yet.

My Technician license band allocations here in DU land are 40M, 15M and 10M on HF bands. Homebrewed wire dipole antenna which I just based from Dave Tadlock KG0ZZ's YOUTUBE tutorials, best tuned on 40M and good enough on 15M. Recently I added another wires for 10M band.

2014, 2015 and 2016 had been good years of band condition to me. At the very start of 2017 , bands been unfriendly in my QTH and found hard time to DX on SSB/Phone mode. Experts say we are getting into the lowest peak of the 11 year Sunspot Cycle. I am thankful that CW is an alternative mode to communicate and I enjoy it... The decoding gives me thrill and the tone sounds music to my ears hihi. This helps in contacting far away stations when bands get tough. I have an old brass straight key and pocket MFJ CW one. I am still working on my speed to improve both on RX (receive) and TX(transmit). Working around 10 - 18 wpm... I am already participating in some CW contests.

Aside from Ham Radio, I am also into the hobby of cross-stitching. And I love to stitch when/while listening to DX Nets and DXing stations. As a matter of fact, I mixed the hobby of stitching to Ham Radio by making x-stitch callsign. This led in making a COLLECTION of AMAZING YOUNG LADIES in the World of Amateur Radio...CHEERS!!!



#FRIENDSHIPS_AROUND_THE_WORLD_TRU_HAM_RADIO

For more information regarding my Ham Radio adventures/activities... Please visit my QRZ.com callsign page, <https://www.qrz.com/db/DW3TRZ>

Vy 73 to OMs... Vy 33 to YLs... MABUHAY !!! de Threeza DW3TRZ

GREETINGS FROM HONG KONG!, SEAN, VR2OY, #15257



Hi everyone! My name is Sean. I have been licensed since 2009 and decided to have an upgrade into a full license ham radio operator in 2017. I love expedition and enjoy making QSO preferably in the mountain top. CW is still fresh to me even I have passed the Morse code test. Currently active in QRP CW contact using MK4 straight key and Youkits HB1B MK3 and a handy Windcamp portable dipole.

My CW mentor is VR2GM who is dedicated and gives full attention in the HAM radio activities. He is actively nurturing new hams to enter into the CW world. He spends his free time to record morse code audio exercises and pass these audio to CW learners to practice day by day.

MAX, DV9/K5EIE, #9134

I have had a ham license for 15 years and been a FISTS member for about 10. CW on HF at QRP output is all I have ever done. My two favorite keys among the 18 in my collection are the GHD GT501D optical and IIQOD Marconi 213. The rig is an Elecraft K2 with a multi-band dipole at 25 m that, because of my location, has nulls pointing at Taipei and Melbourne - much to my dismay. I have a temporary permit to operate while I study for the Philippines ham license exam. My only disappointment about moving here permanently is that it seems like nobody wants to 'chew the rag' in CW. It's all, "ur 599 tu gl 73". So if you hear me calling CQ around a FISTS center of activity, say 'hello' and we will have a real QSO.



ABOUT MY REMOTE CONTROL HAM RADIO SYSTEM (PART TWO), GEORGE, 7J1ATG, #15076



Hello FISTS EA members - my name is George - I was born in Ireland but have lived/worked in several countries including Japan where I have lived/worked for about 25 years (on/off). In Japan I use the callsign 7J1ATG which I obtained in the 90's. I also hold the callsigns GW3YTC and VK4BGR.

In the July 2017 issue I gave a short explanation about the reasons for making my remote controlled radio stations (Part One). I now have three remote controlled radio stations (No.1 is installed in Wales - UK, No. 2 in Queensland (VK4) and No. 3 in IZU Japan).

This Part Two article will explain a little more about my 1st version located in Wales - UK near the village of RHOSNEIGR on the Isle of Anglesey. Future parts will explain the changes/improvements made to the system over time and use at the other two very different locations. My VK4 Remote has no mains power nor cable LAN on site and relies upon Wind/Solar Power and a Broadband Internet Connection and the IZU Remote relies upon dual Broadband Internet Connections....but thankfully has mains power.



Isle of Anglesey - located off the NW Coast of Wales



GW3YTC Remote - located near RHOSNEIGR

I am lucky to have a good friend in RHOSNEIGR who also has Amateur Radio as his hobby. He is James (Henry) Clarke (MW0JHC / EI8KJ) and we went through Radio College together back in the 60's with James also going on to serve as an R/O on several vessels under British, Greek and Israeli Flags over the years.



James (MW0JHC / EI8KJ) Outside his Garden Shed that is home to my GW3YTC Remote Station



GW3YTC Remote Station 10 mtr long "Prowhip" Vertical

James has kindly allowed me bench space and very importantly access to mains voltage and cabled LAN. Having reliable access to power and internet has made the GW Remote my most reliable remote and having James there (living on site most of the time - when he and his XYL are not touring the EU in their luxurious Motor Home (well equipped with his mobile shack)) meant that in the early stages the many "technical hiccups and lock-ups" could be quickly resolved by James' helping hand on site.



Part of the GW3YTC Remote Controlled Station (G4ZLP Digimaster Pro 3 CAT Controller & Interface Box Centre)



Screen Shot of GW3YTC Remote Station on my Laptop in Tokyo (HRD main screen and MRP40 CW Software on bottom LEFT)

Certainly I was very lucky to have had James' and his XYL (Sue's) assistance in establishing my first remote controlled station when I am normally located several thousand kms from the Remote GW3 Site - and there were many many issues with the MK 1 Remote.....mainly EMI based (RF interference from the Transceiver on TX getting into the control circuit and effectively locking the whole system up). You may note in the photograph above the FERRITE CORESthese are only a few of many used on GW3YTC Remote to reduce EMI issues!!

The Mk 1 was "put together" on my work bench in Tokyo as a very basic arrangement and as it "appeared to work well" - I was very keen to get it installed into James' garden shed.....in hindsight maybe too early and ahead of a good long test period on my bench!! But you know how we radio guys can be I guess? Maybe a little impatient at times to try our new toys out!!

To date, all my Remotes are using the OLD (BUT in my opinion great TS440SAT). I picked this Transceiver for four very simple reasons.....I had one spare at the time I was considering this project, it had a very good automatic antenna tuner built in, I loved the set itself and it was so advanced for its day it had an option (by fitting two readily available ICs in empty IC sockets) of Serial Communication (CAT) to control MOST of the TS440 SAT features (via a CAT serial interface). On top of this - it had been designed as a mobile unit and was tough which was a big plus too.

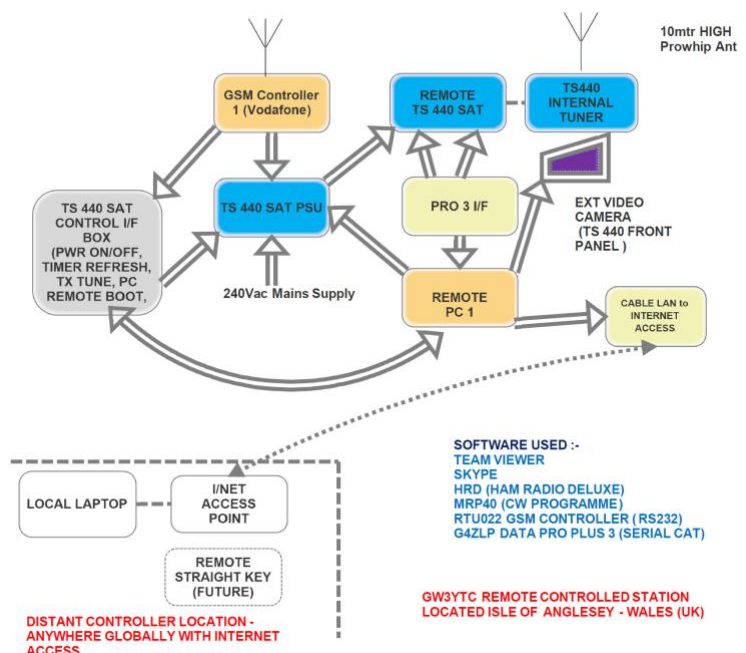
How I dreamt of such a wonderful TX/RX when I was struggling with the old Marconi Ocean Span Main TX and old Marconi Atlanta RX on my days onboard ships in the middle of the Ocean after the Commonwealth Area Network Scheme finished!! The TS 440 SAT performance is probably better than the full radio room's multiple racked equipment was!!

The Mk 1 (GW Remote) station basically makes use of "off-the-shelf" parts and mostly free Software. The current GW Remote arrangement is shown below:-

The current GW3 Remote consists of the TS440SAT (with hard wired interfacing to the internal PCBs to allow remote access to the buttons on the front panel that are normally used for its operation....POWER ON/OFF, Tune, SEND etc etc). These controls are accessed via relays in the "Home Brew" TS440 SAT CONTROL INTERFACE BOX.

The main operating software is a free version of the HRD (HAM RADIO DELUXE) that has the TS440 in its Library and most (but not all) of the TS440 Functions are included. The HRD application has proved to be very good indeed.

Audio (to/from) the TS 440 is routed to my



BLOCK DIAGRAM OF GW3 REMOTE STATION

remote location via a SKYPE CALL via the PC1 and G4ZLP PRO 3 INTERFACE. In the GW3 current version CW Transmission actually uses a carrier OFF-SET USB signal in conjunction with the MRP40 CW Coder/Decoder rather than direct CW keying. The VFO A / VFO B selection allows the switching between the USB TX mode and CW RX mode. When CW is selected on RX (with off-set adjusted) the TS440 Internal 500kHz CW Filter is utilised. The MRP40 CW Coder/Decoder software is not free but a reasonably priced licence fee is charged by the provider in Germany and for that small licence fee the Provider (Norbert at Polar Electronics) provides very good support when problems occur.

The TEAMVIEWER software (which is free of charge for non-commercial applications) is used to remotely control the PC1 functions. TEAMVIEWER has proven to be extremely reliable and robust in operation and can run in the background and auto loads on POWER UP of the PC.

The initial GW3 system relied upon the PC 1 (Laptop) located at GW3 Remote being permanently switched ON. This resulted in a few issues....one being the Laptop internal cooling fan is not designed for permanent use!! The bearings wear out! Another issue was when the PC lock-up....which can happen quite frequently - sometimes due to rf issues (EMI) or OS bugs then this situation can often only be recovered from by a POWER DOWN/UP action of the PC. In the early days that task was handled by James (MW0JHC) and very frequently (- sri James!!) but more recently after adding a GSM 2G Controller (with 8 Digital Inputs, 8 Digital Outputs and an RS232) facility allowing control of that unit via the PC1 a remote power DOWN/UP can be carried out when needed using a "Solenoid" finger rather than James' finger!

I included a USB video camera located in front of the operating position so that I could use the various LEDS on the TS440 SAT to know the status (i.e. tuning, tuned) and also to monitor the S-Meter to observe received signals and also the output power level that can be continuously varied from low power to 100W using the Audio Drive setting on the PC1.

The MRP40 CW Coder/Decoder is easy to use having easily changeable prestored texts (for CQ calls etc) and an input box for typing whatever text you want to send during your QSO. TX Speed is selectable too. The CW Decoder is actually very good with reasonable signal strength - but I prefer to use my ears for CW Reception.

I am in the process of making an interface that will allow me (I hope) to use a straight key at my local Laptop to send CW rather than the Laptop Keyboard.....but this project is still on-going.....and has been for quite a while!!

The 10 mtr long "Pro Whip" Vertical was one of the original ones supplied by the UK manufacturer (sadly no longer in business) and has proved to be very robust in the windy/stormy conditions that occur regularly on the Isle of Anglesey. Later versions of the "Pro Whip" I have used at my other remotes but possibly due to a change in material quality - these later ones have all been destroyed in bad weather at my other remotes!

Whilst maybe not the best antenna ever - the "Pro Whip" has proved a reasonable antenna for this particular location and the TS440SAT happily tunes into it without issue on all bands "usually".

Operating the GW3 Remote is perhaps a bit "CLUNKIE" compared to commercially available remotes but very useable after getting used to it and it has been possible to tailor the needs to my specific location by making my own system rather than buying a commercially available one that may not have been usable over Broadband Internet access etc.

Initial remote access set-up takes about 10 minutes to boot up the remote PC, load the software applications, TUNE the TX and get ready for a QSO. Change over from TX/RX can take a few seconds on occasions due to delays on the Internetand although CONTEST OPERATORS may be a little impatient in such cases - during "normal" QSOs - this has not caused many issues.

Being able to operate via a reasonably QRN quiet location such as the Isle of Anglesey (compared to my Tokyo location with a typical S8 + noise level) has proved to be very enjoyable indeed and the time difference between the UK/Japan means my operating times rarely clash with James' operating times!

In future issues - I will detail my 2nd / 3rd (and hopefully 4th) Remote Controlled Radio Station and the changes (improvements!) that have occurred in these later versions.

Best 73s - George

6Y(JAMAICA) DX VACATION, MASUMI, JA3AVO, #15029

Call : 6Y6J
 QRV : 11-22 Jan. 2018
 QTH : 6Y5WJ/Mr.Josh Walker's home
 OP : JA3AVO & JA3HJI, JA3UJR, JH3LSS, JI3DNN

6Y6J

OP JA3HJI
 JA3UJR
 JH3LSS
 JI3DNN
 JA3AVO

11~22 Jan. 2018

See you on the air soon.



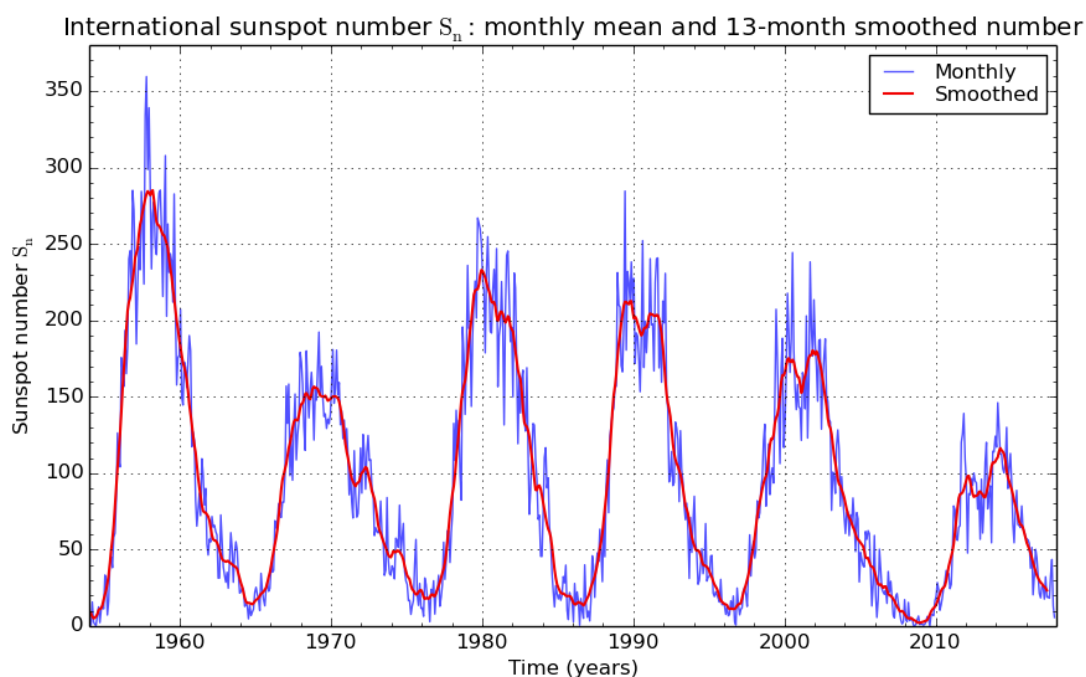
SPECIAL TOPIC: BAND CONDITION

CYCLE 19, MASUMI, JA3AVO, #15029

I got my license(JA3AVO) in August 1959 and started operation. It was the next year after the peak of Cycle 19 (April 1954 - October 1964). In cycle 19, the SSN exceeded 200 peaks. Compared to today's bad condition, it was a wonderful condition like a dream. When I switched on my rig, the South American stations were all heard 59++. Ironically, at that time my DX activity was not so high. When I check my history of DXCC (Current entity), I can understand it.

Year	achieved entities
1964	50
1990	100
2006	200
2017	300

I left an uncontacted entities too much. But I think that I'm happy for my remaining ham life.



SILSO graphics (<http://sidc.be/silso>) Royal Observatory of Belgium 2017 December 1

SUMMARY OF FEA NET IN 2017, NAO, JO3HPM, #15008

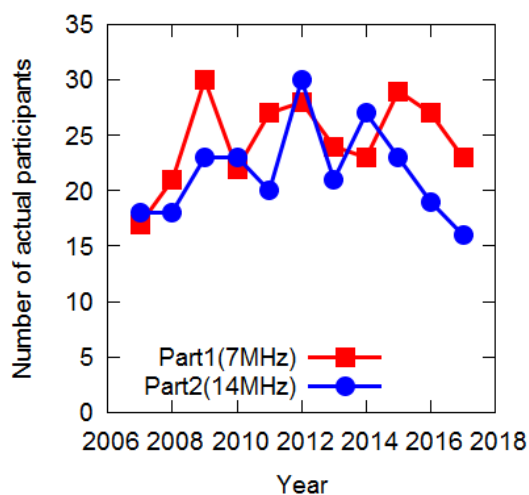
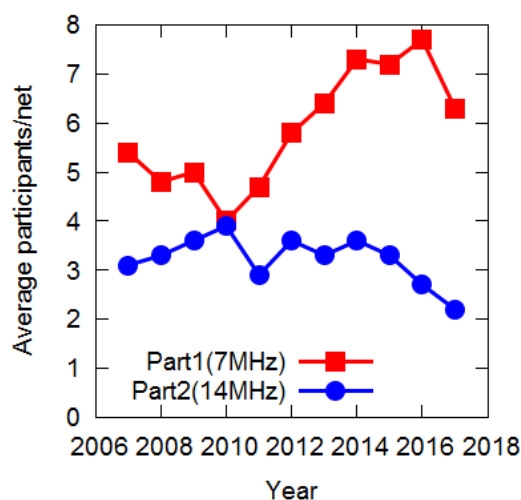
Thank you for joining FEA net in 2017. All results of the net is on http://www.feacw.net/qrv/FEA_Net_Result.html. Because the propagation condition has been poor, number of participants decreased in this year. But some members are active to keep the net with their passions. FEA net provides the good opportunities to practice real CW QSO different from computer practice program. Anyone and everyone who love CW is welcome to the FEA net. See you there!

	Part 1 (7 MHz)	Part 2 (14 MHz)
Total number of nets	52	52
Average participants per net (including controllers)	6.3	2.2
Number of actual participants (including controllers)	23	13
The day with most participants	10 stations (Mar 11, Jul 29)	4 stations (May 14, Jul 2, Sep 10, Oct 1, Oct 8, Oct 15, Oct 29)
Number of nets with no participants	0	14
The persons who participated most (excluding controllers)	JA4IJJ (46 times)	7J1ATG+VK4BGR (15 times)
The day with most countries	JA only	Sep 16, Oct 8, Oct 29, Dec 3, Dec 10, Dec 24, 3 countries
Countries	JA only	9V, BV, DU, JA, UK, VK

Summary table in 2017

Call	Part 1	Part 2	Part 1+2
JO3HPM	44	11	55
JA4IJJ	46	0	46
7J1ATG	24	15	39
JK7UST	27	4	31
JL1GEL	22	9	31
JS1QIZ	20	1	21
JE1TRV	17	0	17
JH2HTQ	15	0	15
JG1BGT	11	0	11
JE1RZR	3	7	10
JJ2GZC	7	0	7
JR0QWW	7	0	7
BX8AAD	0	7	7
JJ1XJB	6	0	6
JR7OEF	6	0	6
JA4MRL	4	1	5
JJ3NOF	4	0	4
JJ1TTG	3	0	3
JA1NUT	2	0	2
JE1REU	2	0	2
JF3KNW	1	1	2
9V1VV	0	2	2
VK5EEE	0	2	2
VK7AD	0	2	2
JA9MAT	1	0	1
JL1IRB	1	0	1
JS2AHG	1	0	1
BW/G4TDS	0	1	1
DV9/K5EIE	0	1	1
VK6RR	0	1	1

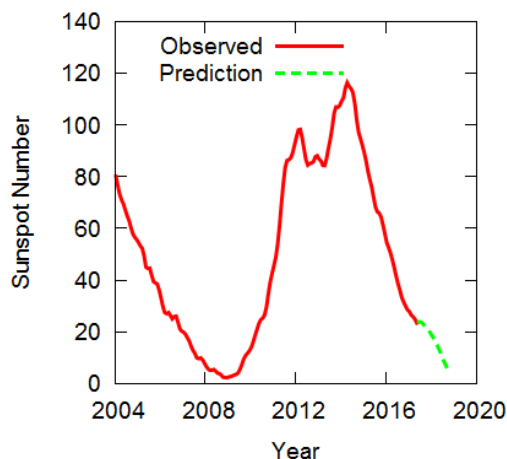
Participants list excluding controllers.



FEA CW NET RESULTS: NO. 667 TO 680, NAO, JO3HPM, #15008

No.	Date (Y/M/D)	Time (UTC)	Freq. (MHz)	Controller	Participants
680-2	2017/12/31	0800-0815	14.054	JL3YMV	none
680-1	2017/12/30	2300-2355	7.0255	JL1GEL	JE1RZR,JA4MRL,JR7OEF,JK7UST,JS1QIZ,JO3HPM
679-2	2017/12/24	0800-0827	14.055	JE7YTQ	VK4BGR,JE1RZR
679-1	2017/12/23	2300-2335	7.0255	JS1QIZ	JA4IIJ,JL1GEL,7J1ATG/2,JO3HPM
678-2	2017/12/17	0800-0820	14.054	JO3HPM	none
678-1	2017/12/16	2300-0005	7.0255	JL1GEL	JA4IIJ,JS1QIZ,7J1ATG/2,JO3HPM,JI1XJB/6
677-2	2017/12/10	0800-0831	14.054	JE7YTQ	BX8AAD,VK5EEE
677-1	2017/12/9	2300-2345	7.026	JS1QIZ	JA4IIJ,JI1XJB/6,JL1GEL,7J1ATG/2
676-2	2017/12/3	0800-0820	14.054	JO3HPM	UK/JE1RZR,VK4BGR
676-1	2017/12/2	2300-2354	7.0265	JL1GEL	JA4IIJ,JR0QWW,JS1QIZ,JO3HPM,7J1ATG/2
675-2	2017/11/26	0800-0812	14.072	JE7YTQ	none
675-1	2017/11/25	2300-2355	7.0265	JS1QIZ	JA4IIJ,7J1ATG/2,JK7UST,JO3HPM,JA1NUT,JI1XJB/6
674-2	2017/11/19	0800-0824	14.0545	JO3HPM	VK4BGR
674-1	2017/11/18	2300-0003	7.0255	JL1GEL	JK7UST,JA4IIJ,JH2HTQ,JR7OEF,JI1XJB/6,JO3HPM
673-2	2017/11/12	0800-0824	14.054	JE7YTQ	9V1VV,JO3HPM
673-1	2017/11/11	2300-2356	7.008	JS1QIZ	JL1GEL,JH2HTQ,JA4IIJ,JI2GZC,JO3HPM
672-2	2017/11/5	0800-0822	14.054	JO3HPM	DV9/K5EIE
672-1	2017/11/4	2300-0002	7.0255	JL1GEL	JK7UST,JA4IIJ,JH2HTQ,7J1ATG/2,JE1TRV,JS1QIZ,JO3HPM
671-2	2017/10/29	0800-0829	14.054	JE7YTQ	VK4BGR,BX8AAD,JO3HPM
671-1	2017/10/28	2300-2357	7.0276	JS1QIZ	JA4IIJ,JL1GEL,JO3HPM,JH2HTQ,7J1ATG/1
670-2	2017/10/22	0800-0839	14.054	JO3HPM	BX8AAD
670-1	2017/10/21	2300-0002	7.0265	JL1GEL	JS1QIZ,JA4IIJ,JO3HPM,JE1TRV,JG1BGT,JI2GZC
669-2	2017/10/15	0800-0836	14.054	JE7YTQ	JL1GEL,JO3HPM,JF3KNW
669-1	2017/10/14	2300-2346	7.026	JS1QIZ	JH2HTQ,JG1BGT,JO3HPM,JA4MRL
668-2	2017/10/8	0800-0835	14.047	JO3HPM	UK/JE1RZR,JL1GEL,VK4BGR
668-1	2017/10/7	2300-2349	7.0075	JL1GEL	JS1QIZ,JO3HPM,JR7OEF,JA4IIJ
667-2	2017/10/1	0800-0837	14.054	JE7YTQ	VK4BGR,JO3HPM,JL1GEL

FINALE



What do you think of the recent propagation condition? FEA was established in 2004, so we experienced at least one solar cycle until now. According to the left graph, although year 2017 was not a bottom of the solar cycle, I felt the propagation condition at the FEA net was the worst. The prediction of sunspot number in 2018 will surely decrease. But don't get discouraged. Let's keep pounding the brass in 2018. The only way to keep Morse alive is to use it on the air. HNY, 73/88 and stay sober de Nao.

(SILSO data/image, Royal Observatory of Belgium, Brussels)